

CROP HUSBANDRY AND HORTICULTURE

SCHEME OF EXAMINATION

There will be three papers, Papers 1, 2 and 3 all of which must be taken. Papers 1 and 2 will be a composite paper to be taken at one sitting.

PAPER 1: Will consist of fifty multiple choice objective questions all of which must be answered within 1 hour for 50 marks.

PAPER 2: Will consist of six essay-type questions. Candidates will be required to answer four questions within 2 hours for 80 marks.

PAPER 3: Will be a practical paper for school candidates or alternative to practical test paper for private candidates. Each version will consist of four questions all of which must be answered within 2 hours for 60 marks.

SAMPLE QUESTIONS

PAPER 1

(OBJECTIVE TEST)

1. Which of the following crops is propagated by seed?
 - A. Banana
 - B. Cocoyam
 - C. Onion
 - D. Sweet potato
2. The practice of exposing seedlings to short periods of drought before transplanting is known as
 - A. hardening off.
 - B. pricking out.
 - C. stratification.
 - D. vernalization.
3. A **major** cause of post-harvest losses in crop production is
 - A. low soil fertility.
 - B. low yielding crop varieties.
 - C. inadequate irrigation facilities.
 - D. inadequate storage facilities.

4. The sides of a bed for vegetable production are firmed to ensure that
 - A. organic matter remains in the soil.
 - B. roots of crops would be well-anchored.
 - C. movement on the farm would be easy.
 - D. the bed would not be washed down easily by rain.

5. *Dysdercus supersticiosus* is a serious pest of
 - A. banana.
 - B. cotton.
 - C. pawpaw.
 - D. pineapple.

6. The recommended spacing for a tree crop is 10m x 5m. Determine the number of seedlings required to plant one hectare of land.
 - A. 5
 - B. 50
 - C. 200
 - D. 666

7. *Spiking* is done in the maintenance of lawns in order to
 - A. remove weeds from the lawn.
 - B. control pests on the lawn.
 - C. improve aeration in the soil.
 - D. supply water to the soil.

8. Which of the following ornamental plants can be used for interior decoration?
 - I. *Caladium*
 - II. *Croton*
 - III. *Sansevieria*
 - A. I and II only
 - B. I and III only
 - C. II and III only
 - D. I, II and III

9. An example of invasive alien plant species is
 - A. *Chromolaena odorata*.
 - B. *Cyperus rotundus*.
 - C. *Striga hermonthica*.
 - D. *Spigelia anthelma*.

10. Which of the following agents provide services in crop production?
 - I. Farm Managers
 - II. Extension Officers
 - III. Researchers

- A. I and II only
- B. I and III only
- C. II and III only
- D. I, II and III

PAPER 2

(ESSAY)

1. (a) State **four** characteristics of cocoa plant. [4 marks]
- (b) List **four** cultural practices carried out on a cocoa plantation. [4 marks]
- (c) Discuss the cultivation of pepper under **each** of the following headings: [12 marks]
- (i) climatic requirement;
 - (ii) land preparation;
 - (iii) weed control;
 - (iv) pest control.
2. (a) Name **three** invasive alien plant species in your country. [3 marks]
- (b) Explain **each** of the following terms as used in crop production: [9 marks]
- (i) hardening off;
 - (ii) composting;
 - (iii) topping.
- (c) Give **two** reasons for carrying out **each** of the following practices: [8 marks]
- (i) topping;
 - (ii) hardening off.

PAPER 3

(PRACTICAL)

List of specimens

Specimen A	-	Tomato fruit
Specimen B	-	Gargen egg fruit
Specimen C	-	Coconut fruit

- Identify **each** of specimens **A, B, and C**. [3 marks]
 - Give the scientific name of the plants from which **each** of specimens **A, B and C** was obtained. [3 marks]
 - Draw and label specimen **A**. [5 marks]
 - State **four** uses of specimen **C**. [4 marks]

PAPER 3

(TEST OF PRACTICAL WORK)

- Figures **1** and **2** are illustrations of vegetables.
Study them carefully and answer the questions that follow.

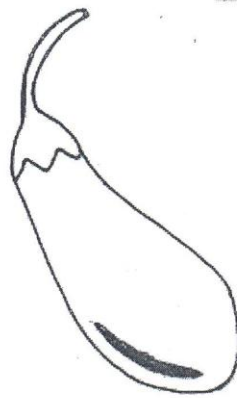


Fig. 1

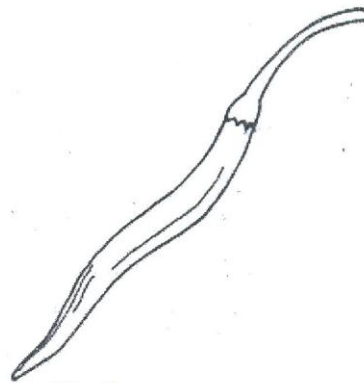


Fig. 2

- (a) Identify by the scientific name, the plant from which **each** of the vegetables illustrated could be obtained. [1 mark]
- (b) What is the family name of the vegetable illustrated in figure 2? [3 marks]
- (c) Name **one** pest and **one** disease that could affect the:
(i) vegetable illustrated in figure 1;
(ii) plant from which the vegetable in figure 1 could be obtained. [4 marks]
- (d) State **one** control measure **each**, for pests and diseases named in (i). [2 marks]
- (e) State **two** uses of the vegetable illustrated in figure 2. [4 marks]
- (f) State **two** methods of preservation for **each** of the vegetables illustrated.
2. A farmer observed black sigatoka fungus attack on his plantain farm.
- (a) State **two** effects of the fungal attack on the plants [2 marks]
- (b) Suggest **three** possible ways to control the fungus. [3 marks]